



Eastern Indiana Gem & Geological Society

ROCK PICKINGS

June 2016

P.O. Box 1724 • Richmond, IN 47375 • eiggs.weebly.com • facebook.com/EasternIndianaGemGeologicalSocietyEIGGS

EIGGS Board Members

President

Mark Lisota
317-525-1418
mlisota@hotmail.com

Vice President

Mary Ann Morse
765-914-2672
jfmamorse@gmail.com

Secretary

Patrick Pierce
937-838-1644
patrickwp@gmail.com

Treasurer

Dave Straw
765-966-4249
strawdl@aol.com

Show Chairman

Judy Burton
937-339-1966
jleeburton@woh.rr.com

Vendor Chairman

John LaMont
812-322-7809
midwestchar@gmail.com

Newsletter Editor

Lisa Morris
EIGGSnews@gmail.com

Memberships:

Annual dues
\$15 Individuals
\$20 Families

Please send dues to:

EIGGS
PO Box 1724
Richmond, IN 47375

7 Pitch-in Picnic: Thursday, July 7, 6:00 p.m.

PRESIDENT'S MESSAGE



Visit Indiana State Museum for free, see pg. 9 for details.

Hello, rockhounds:

This is your final notice to attend the last equipment re-certification session on 6/28/16. If you cannot attend this final session, please contact Deb Chagares or John Morse and they will put you on a re-certification "WAIT LIST."

You will be asked not to use the shop equipment until you have completed the recertification training.

I want to thank Mike Ragen for installing the new air conditioner. The shop can heat up pretty quickly in the summer and this has been a hot summer so far.

Our summer picnic is coming up on 7/7/16 at the clubhouse. Family and friends are invited. Please bring a covered dish to share with our members.

I will see you there!

Mark

INSIDE THIS ISSUE

PAGE 3

Recertification June 28



John Morse offers tips on saw usage

PAGE 4

Members win at fair



Pendant by Johnathon Terhaar

PAGE 8

Hartman Rock Garden



Springfield home to folk art garden

PAGE 12

Jeweler's Bench profile



Barbara Kuhlman

Members present

Libby Adams, Judith Echano Medina, Emily Gibson, Scott Gibson, Barbara Kuhlman, Susan Kuhlman, Mikala Jones, Xavier Jones, John LaMont, Lisa Morris, Mary Ann Morse, Patrick Pierce, Charlene Reidenbach, Kathy Sheehy, Ed Tucker, Danny Spurgeon, Dave Straw, Joe Wirrig.

Meeting notes:

The meeting was called to order at 6:30 p.m. by vice president Mary Ann Morse.

Shop recertification:

Shop equipment re-certification will be held June 21 and June 28 from 6-8 p.m. This re-certification is mandatory to continue using the equipment in the shop.

Members who cannot make it to training should contact Deb Chagares or John Morse to be put on the training wait list. (deb@chagaresphotography.com or jfmamorse@gmail.com)

Members will be asked not to use the equipment until they have completed the recertification training.

After the certification is completed we will institute a sign-in sheet for shop use. There will be a shop supervisor for each session.

Poster contest:

The agate poster contest deadline was extended till June 15.

Midwest Federation meeting and show:

The MWF show and meeting will be August 19-21 in South Bend. EIGGS may send one delegate to the Aug. 20 MWF meeting. If you are interested in serving in this role, please contact Mark or Mary Ann by the August meeting.

Newsletter editor position

If you are interested in creating, printing and distributing the monthly EIGGS newsletter, please contact Mark.

Treasurer's Report

Income: \$742

\$640 dealers

\$88 shop

\$14 soda

Expenses: \$773

\$30 newsletter

\$335 utilities (*Electric was higher than normal. Baseboard heater was left on.*)

\$10 show

\$49 building

\$346 misc.

\$302 dumpster rental, gas can, gas, A/C outlet.

2 Rock Pickings: June 2016

Special Thanks to Mike Ragen!

Mike installed the new air conditioner in the shop on Tuesday, June 21. He installed angled braces to insure the unit would drain properly. While the final detail work still needs to be done, the unit quickly cooled the shop down in time for the recertification session.



Mike Ragen



Mowing:

Thanks to the people who have mowed. We still need volunteers. There is a mowing sign up list over the microwave.

Air conditioner:

A/C will be installed by Patrick June 4 or 5.

Update: Mike Ragen installed the A/C June 21. Thanks, Mike!

July picnic:

The annual picnic will be July 7 at 6 p.m. The club will provide hamburgers, hot dogs, buns, condiments and table service. Bring a side dish or dessert. Guests and family members are welcome. We are inviting the Troy club this year.

There will be various watchmaking and jeweler's tools for sale at the picnic. There will also be some completed pieces for sale, including a Zuni turquoise belt buckle. (*see page 4 for more details.*)

Outreach:

Charlene received a letter from a blind woman who loves rocks but who has never been to a rock show. She would like to have someone to talk to about rocks or a pen pal. Contact Charlene for details.

Motion to adjourn by Joe; seconded by Charlene at 7:11 p.m.

Show & tell:

Desert rose from Egypt: Judith Echano Medina

Petrified wood & Howardite: Scott Gibson

Louisiana opal: Lisa Morris



EQUIPMENT RECERTIFICATION JUNE 28

In order to keep our equipment operational, it is important that everyone follows the same policies and procedures.

FYI: recertification is mandatory

Everyone who wishes to use the equipment was initially certified, but periodic "refresher" sessions are needed to be recertified on the equipment.

Please note that **recertification is MANDATORY**, if you want to use the equipment.

The next recertification session is :

Tuesday, June 28 from 6-8 p.m.

Refresher sessions will be presented on the saws, grinders and other equipment.

If you didn't attend on June 21, please attend on June 28. If you cannot attend, please contact Deb Chagares (deb@chagaresphotography.com) or John Morse (jfmamorse@gmail.com) and they will put you on a re-certification "WAIT LIST." You will be asked not to use the equipment until you have completed the recertification training.

This has been mentioned at the last two meetings, in e-mail reminders and in the May newsletter. However, if you have friends in the club who use the equipment, please relay this information to them. (Not everyone receives, or READS, their e-mail.)



Club members Libby Adams and Sandy Weadick listen as John Morse reviews the basics of using the chop saw to cut slabs. Fifteen members attended the first recertification session.

Recertified members as of June 21

The following members were recertified on June 21. Thanks for attending! If your name is not on the list, be sure to attend the June 28 session.

- | | | |
|-----------------|----------------|---------------|
| Libby Adams | Marty Lucas | Nancy Renfro |
| Julianna Barnes | Lisa Morris | Kathy Sheehy |
| William Barnes | John Morse | Dave Straw |
| Deb Chagares | Mary Ann Morse | Ed Tucker |
| Jim Lucas | Mike Ragen | Sandy Weadick |

MOWING VOLUNTEERS NEEDED (aka "Please don't make us buy a goat!")



Like to work outdoors? Want to help out your rock club? We need a volunteer (or a few volunteers? or a goat?) to mow the yard at the clubhouse.

The club has a nice riding mower for you to use, and you will be reimbursed for any gas you put in the mower.

Depending on the weather conditions, the grass should be mowed once a week. We could post a monthly sign-up list, if that would help distribute the workload.

If you would like to help out the club, please contact Dave Straw and he will show you the mower, property lines, and everything else you need to know. Strawdl@aol.com or 765-966-4249.

Thanks to Naomi Jones and family, Dave Straw, John LaMont, Charlene Reidenbach, and Mike Ragen for mowing already!



CLUB PICNIC SET FOR JULY 7, 6 P.M.



■ A recipe and directions for a patriotic flag cake can be found at secretlifeofachefswife.com if you are interested.

Members and their guests are invited to the annual club picnic July 7 at the clubhouse at 6 p.m.

Hamburgers, hot dogs, buns, condiments, drinks, paper plates and silverware will be provided by the club. Members are asked to bring a side dish, salad or dessert items.

The Troy club has been invited to join us, so it should be a fun evening with fellow rockhounds.

In addition to great food and fellowship, there will also be a wide variety of jeweler/watchmaker tools for sale. See page 5 for a sampling of items. If you would like more information on the items, contact Susan Kuhlman, who is arranging this sale.



CONGRATULATIONS TO FAIR WINNERS

Congratulations to EIGGS club members **Johnathon Terhaar** and **Naomi Jones** who both earned Reserve Grand Champion awards for their jewelry pieces at the recent Wayne County Fair. Johnathon entered a wire-wrapped pendant using a piece of larimar that he cut and shaped at the club. Naomi entered a wire-weaving pendant on a Viking weave chain.

In addition to winners in the jewelry/crafts division, club members also had success at the rabbit show. Congratulations to rabbit winners **Dakota Jones**, **Mikala Jones**, **Chase Siliven** and **Johnathon Terhaar**.



↑ Johnathon Terhaar's pendant →



← Naomi Jones' pendant ↑

Be sure to see the next issue for more information and photos of these winners, their awards and categories!



■ Club member Chase Siliven earned a Reserve Champion award for his rabbit doe and litter.

TOOL SALE AT ANNUAL PICNIC, JULY 7

Not only can you have a good meal and catch up with friends at the annual EIGGS picnic, you will also be able to add some tools to your collection.

Club member Susan Kuhlman has a friend who is liquidating her late husband's collection of watch and jewelry repair tools.

Items for sale will include: a Chicago electronic digital ultrasonic cleaner with heat; like new condition; a small ultrasonic cleaner; various watch and jewelry repair tools; gauges, taps, files, abrasives, winders, pin vises, engravers, fine screwdrivers, a finger ring cutter, and more. There will also be watch parts, many individually wrapped and labeled, clocks, a collectible watch, an onyx box, a turquoise belt buckle stamped A. Penketewa.

Have a friend who's interested? Bring them along for food and fun!



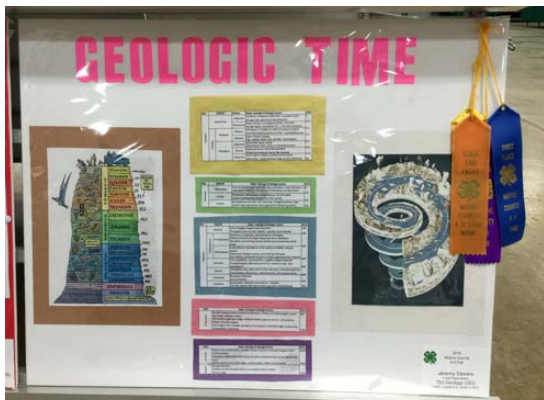


4-H GEOLOGY PROJECTS AT THE FAIR

To promote an interest in geology, EIGGS members participated in two Super Saturday events hosted by the Wayne County 4-H.

The goals were to promote a love of the earth sciences, help increase the numbers of students participating in the 4-H geology categories, and to promote our rock show and club.

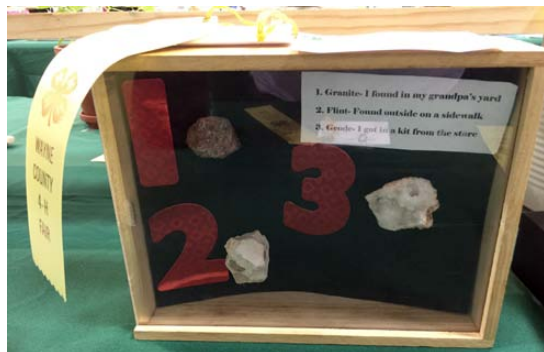
Below are some examples of projects at the fair.



■ Jeremy Devers, level 2, grades 6-8.



■ Jeremy Devers, grade 6-8.



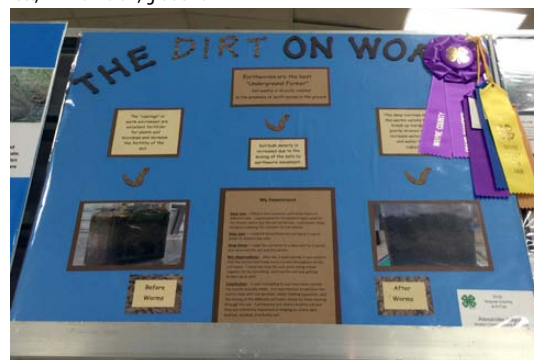
■ Gavin Barrett, mini division, grade 1.



■ Hannah Stiffler, Level 3, grades 9-12.



■ Kaylee Bunch, mini division, kindergarten.



■ Alexander Logue, Level 3, grades 9-12.



■ Aubrey Bihl, mini division, grade 1.



4-H GEOLOGY PROJECTS CATEGORIES

Below are projects available to 4-H members at each grade level. These are the areas in which EIGGS members could assist 4-H members through 4-H sponsored workshops, our show, or at Super Saturday events.

Level 1: Grades 3-5

Exhibit: Display a poster (or use an exhibit box) based on ONE of the following activities:

The Rock Cycle. Explain the rock cycle using both words and pictures.

Rock Types. Display rocks from the three major types: igneous, sedimentary, and metamorphic. Examples of each include: Igneous - granite, basalt, gabbro; Sedimentary - limestone, dolomite, shale, chert, gypsum; and Metamorphic - quartzite, schist, marble, slate.

Earth Processes How Rocks Change. Color and display the picture in your book or draw and color your own on your poster. Briefly describe the earth processes that are shown.

Rock Artwork. Display your rock artwork and the story that you created.

Collections. Display and identify 6-8 rocks.

Making Crystal Models. Display the crystal forms characteristic of most minerals (cubic, tetragonal, hexagonal, orthorhombic, monoclinic, triclinic) in a display box with their name and mineral with this form. You may color, paint, or use markers on your crystal models.

Molds and Casts. Display three molds and/or casts in a display box. Describe the steps that you followed to create a mold or cast.

Level 2: Grades 6-8

Exhibit: Display a poster (or use an exhibit box) based on ONE of the following activities:

Rocks with Different Textures. Identify and display six rocks with three very different textures (two rocks of each general type). Include three grades of sandpaper and show how the differences in sandpaper is similar to the differences in rock texture.

Indiana Limestone. Show and label pictures or photographs of ten buildings, sculptures, or monuments made from Indiana limestone.

Mineral properties and tests. Explain the characteristics: crystal form, cleavage, hardness, appearance, and streak. Explain tests used in identifying specimens. Examples you might include are streak, acid, hardness, chemical analysis, and specific gravity.

How We Use Minerals. Show 10 common products that contain minerals. Explain the minerals that are contained in these products and the characteristic that makes them useful.

Geologic Time. Create a display to show the major geologic eras. Indicate the names, specific features, and approximate length of each.

Indiana's Glaciers. Show the extent of Indiana's three main glaciers.

Indiana Geology. Exhibit a map or sketch of Indiana showing at least ten sites with interesting geological formations. Describe the formation and sketch or show a picture of the formation.

Field Trip. Describe a geology field trip that you took. Describe where you went and what you learned. Include photographs (if possible) or sketch what you saw.

Collections. Display and identify one of the following: 8-16 minerals, fossils, or 4-8 of each (half minerals and half fossils). You may exhibit a new collection in subsequent years but not one you have already exhibited.

Level 3: Grades 9-12

Exhibit: Display a poster (or use an exhibit box) based on ONE of the following activities:

Geology Research. Prepare a display to teach others about the topic you studied. Include an appropriate title, abstract (brief description of your topic), and photographs, drawings, charts, or graphs that help explain your topic. This activity may be repeated if a new topic is chosen in subsequent years.

Lapidary and Jewelry. Show how stones and minerals are turned into polished stones and jewelry. Show and explain the steps involved.

Miniatures. Display five miniatures in a display box and explain the benefits of collecting miniatures and how they are prepared.

Indiana's State Parks or Forests. Create a matching game of Indiana's State Parks or Forests and a brief description.

Indiana, U.S., or World Geology. Teach others about one Indiana, U.S., or World Geology topic.

Career Exploration. Prepare a display that explains your interview with someone who needs an understanding of geology to do their job.

Independent Study: Grades 9-12

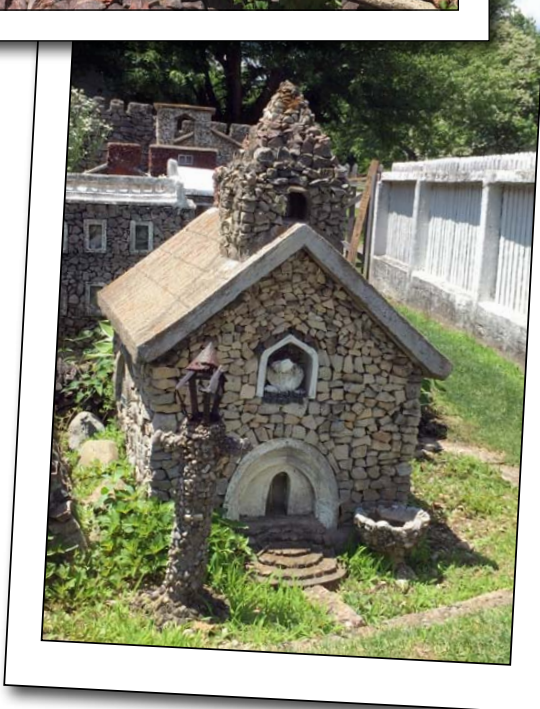
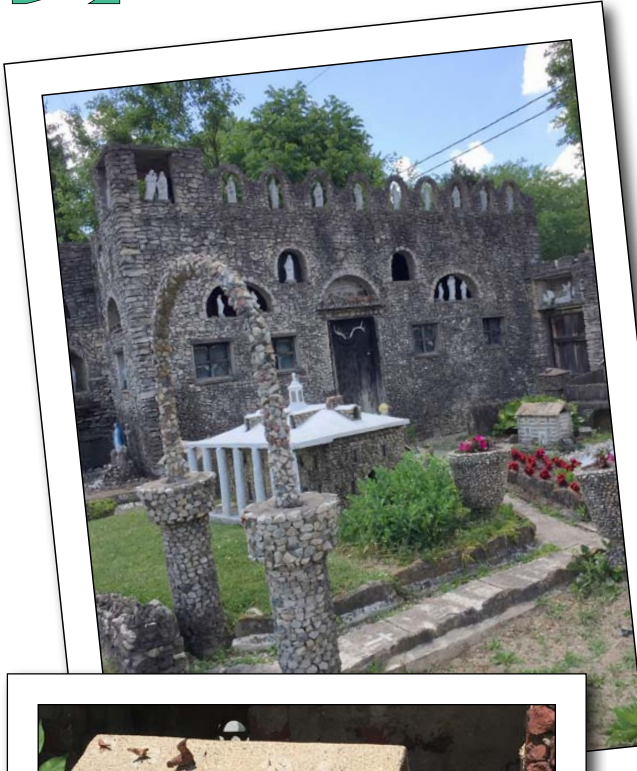
Advanced topic - Learn all you can about a geology topic and present it on a poster. Include a short manuscript, pictures, graphs, and list the works cited to describe what you did and what you learned. Title your poster, "Advanced Geology - Independent Study"

Mentoring - exhibit a poster that shows how you mentored a younger 4-H member. Include your planning, the time you spent, the challenges and advantages of mentoring, and how the experience might be useful in your life. Photographs and other documentation are encouraged. Resources must be from educational or government entities.



ON THE ROAD: HARTMAN ROCK GARDEN

text gathered from www.hartmanrockgarden.org website



Over the past 80+ years, the Hartman Rock Garden in Springfield, Ohio, has welcomed tens of thousands of visitors from all over the world. The Hartman Rock Garden is one of the nation's most intriguing and revered works of *in situ* folk art, an outsider art phenomena where self-taught artists construct fascinating worlds out of concrete, metal, stone, and whatever else they can find.

Harry George "Ben" Hartman was born in 1883 in Edenville, Pennsylvania. At the age of 16 he left home to learn mold-making, a craft in which he quickly became highly-skilled. He moved to Springfield, Ohio in 1913, where he worked as a molder at the Springfield Machine Tool Company foundry.

After the death of his first wife Maggie in 1928, Ben married Mary, who had a daughter, Ruth, from a previous relationship. The couple soon added two more children to their family: Martha and Benjamin. They resided in a small house

on the corner of Russell and McCain, located in a mostly rural area on the outskirts of town. There Ben and Mary raised pigeons, chickens and rabbits. Both had a love of gardening and even built two greenhouses to hold the many varieties of flowers and vegetables they grew.

In 1932, at the age of 48, and in the midst of the Great Depression, Ben was laid off from his job as a molder. He was not content with his newly-sedentary lifestyle and began constructing a cement fishing pond in his backyard. By the time he had finished the project, Ben was hooked.

He began constructing a variety of structures and figures, following the themes of history, religion, and patriotism. For the remaining twelve years of his life, Ben filled his yard with over fifty structures, numerous varieties of plants, and countless handmade figurines. Using hundreds of thousands of stones, Ben had created a very unusual garden.

In 1939, he returned to work at the foundry, which dramatically slowed his work on the garden. Only five years later in 1944, Ben died from silicosis, an occupational lung disease. For the next 53 years, Mary took on the monumental task of maintaining the garden, caring for the wide array of flowers, preserving Ben's intriguing structures, giving tours, and even adding small details where she saw fit. Visitors may have seen it as a rock garden, but she called it "a garden of love."

After Mary's passing in 1997, the garden began to succumb to the elements and, 10 years later, was showing serious signs of disrepair and neglect. In 2008, the Wisconsin-based Kohler Foundation, known for its involvement in the preservation of significant folk art sites across the country, purchased and restored Ben and Mary's unusual masterpiece. In December 2009, with most of the restoration complete, Kohler transferred ownership of the site to the newly-formed Friends of the Hartman Rock Garden, a local 501(c)3 not-for-profit organization.. Although never actually closed during the restoration, the garden celebrated its grand reopening in June 2010.

Information

Where: 1905 Russell Ave.
Springfield, OH 45506

Hours: 9 a.m.-5 p.m. daily

Admission: FREE
donation suggested

Group tours: may be arranged

E-mail: info@hartmanrockgarden.org

Website: hartmanrockgarden.org



ON THE ROAD: INDIANA STATE MUSEUM

MRL offers State Museum passes granting free regular admission

The Indiana State Museum in Indianapolis has a wide variety of exhibits, including a terrific interactive earth science display, complete with a large collection of fossils, minerals and even a moon rock.

If you have a Morrison-Reeves library card, you can check out the display, and the rest of the museum for **FREE**. In order to do so, you will need to go to the library and check out one of two Indiana State Museum passes.

You may check a pass out for one week and each pass is good for four FREE admission tickets. Adult tickets are usually \$13, so this is a great deal. Additionally, the pass also gives card holders discounted \$3 parking.

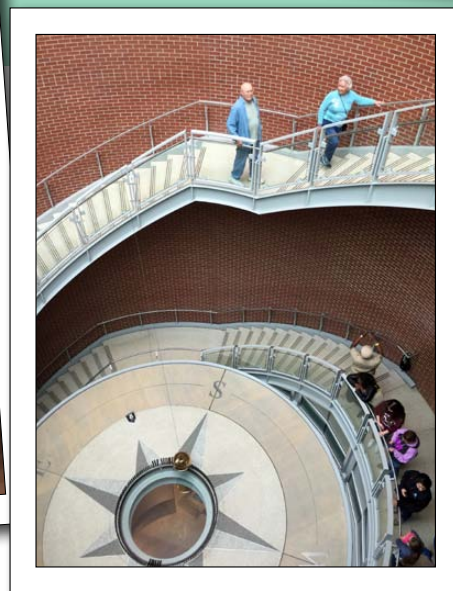
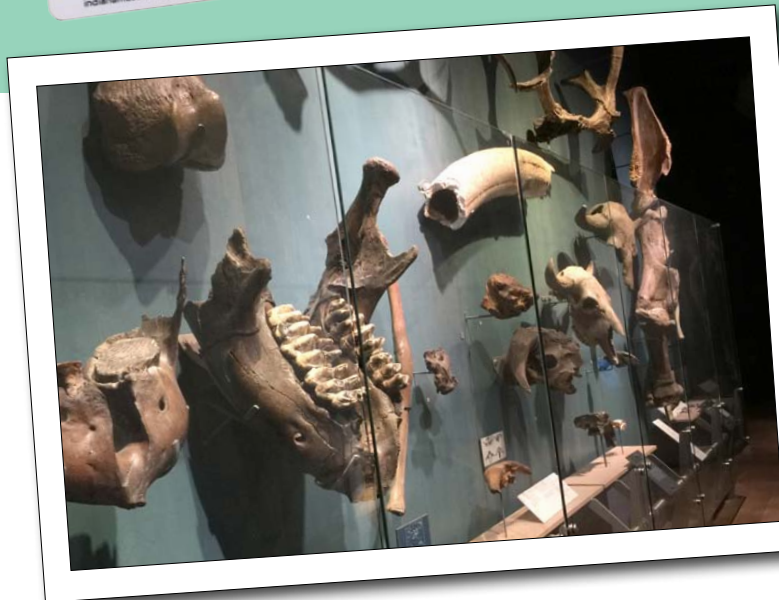
Visit www.indianamuseum.org for current displays and hours.



MRL Indiana State Museum Pass Information



- One pass is good for up to four complimentary general admissions and validated \$3 parking in the White River State Parking Garage only.
- Special exhibits, programs and the IMAX Theater are not included for free.
- One pass may be checked out per library card at a time.
- Passes can be checked out for seven days. Pass checkout cannot be renewed.
- If the pass is not returned to the library, the pass will be deactivated so it cannot be used.
- Any tickets you get with the pass must be used the day you get them.



- Richard Morris (yep, that's my dad!) checks out the moon rock at the Indiana State Museum.
- Fossil ferns are only a small part of the museum's large collection.
- Fossils and artifacts from Indiana are prominently featured.
- Richard & Midge Morris admire the pendulum clock during at the Indiana State Museum.

2016 AGATE EXPO

July 7, 2016 Agate Symposium
July 8-10, 2016 Exhibit and Show Floor Open
July 9, 2016 Agate Banquet and Celebration



40+ Vendors 120+ Exhibits Kids Activity Area Show Presentations
WWW.AGATEEXPOS.COM



Show Details

July 8–10, 2016 – Show Floor and Exhibits Open!

Cedarburg High School
W68N611 Evergreen Blvd.
Cedarburg, WI 53012

Show Hours:

Thursday, July 7: 6:30 p.m. – 9 p.m.

(Symposium Ticket Holders Only)

Friday, July 8: 9:30 a.m. – 6 p.m.

Saturday, July 9: 9:30 a.m. – 6 p.m.

Sunday, July 10: 10 a.m. – 4 p.m.

Information:

The show floor will consist of approximately 45 vendors, from across the globe, showcasing their products for collectors and rock enthusiasts. Customers can view and purchase everything from top collector specimens, down to small tumbled stones. There will be jewelry and other finished products made from agates originating from around the world.

Approximately 80 collectors and geologists will be invited to exhibit a portion of their private collections so that attendees can view the "best of the best" of the agate world. This should be a spectacular part of the show days.

Planners anticipate approximately 7,500 to 10,000 people coming and going during these three days.

There are opportunities to volunteer your time at the show. If interested, contact planner Veronica Woods at mail@agateexpos.com

Experience the largest collection of agate ever assembled, July 7-10, 2016!

Everyone from gemologists and rock collectors to casual shoppers and families will love exploring these amazing, beautiful rocks!

45 vendors
selling polished
stones, jewelry
and more

Speakers and
presentations

Kids area
with fun
activities

120+
Exhibits



For more information and to buy tickets visit

WWW.AGATEEXPOS.COM

Do You Have Suggestions for EIGGS Events or Presentations?

May 17 was Geode Night at the Brukner Gem and Mineral Club in Troy, Ohio. After their meeting, each member was given a geode, which Mike Manning then cracked open. A discussion followed which covered the formation of geodes and their internal structures.

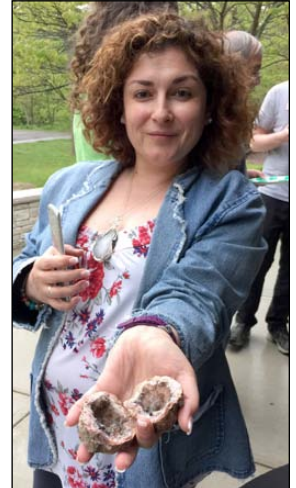
The Brukner Club tries to incorporate an event or presentation after each of their monthly meetings. In the past year they've had presentations about mineral collecting in Michigan's Upper Peninsula, visiting the Quartzite show, and rock collecting out west.

They have also had presentations on onyx and other stones and held a Geode Night and a Fossil Night. They will have an upcoming jewelry-making presentation and a Novelty Night.

Recently our club has been having Show and Tell at meetings, and members are always encouraged to bring interesting pieces to show. If you have ideas for presentations or club activities, please let an officer know.



■ After cracking open a geode, Mike Manning hands it back to Judy Burton at the Brukner Gem and Mineral Club meeting in Troy, Ohio. Members of the club plan a variety of events and presentations to coincide with their monthly meetings. If anyone has suggestions for EIGGS club events or activities, please let an officer know.



■ Once her geode was cracked open, Judith Echano Medina was happy to show the crystals that were found inside. Several Richmond club members are also members of the Troy club.

LAPIDARY LAB USAGE & HOURS

Please remember that members using the club's equipment are required to attend six regular club meetings a year. Participants must also be trained in proper equipment usage.

There is a \$2 fee per lab session for equipment usage & maintenance.

Tuesdays 6-8 p.m.

This lab is perfect for beginners and those with intermediate skill levels since there are experts on hand to teach basic and advanced skills.

Thursdays 6-8 p.m.

The lab is usually open on Thursdays. Call or text Deanna Smith (765-914-4811) or Alma Glisson (937-231-3024) to be sure someone will be there.

Sundays 6-9 p.m.

The lab is usually open on Sundays. Call or text Missy Killion in advance to be sure someone will be there. Her number is 765-960-7635



MWF CONVENTION DELEGATES SOUGHT FOR AUG. 19-21

by Tony Kapta, MWF Credentials Chairman MWF Past President President, Central Illinois Gem and Mineral Club Decatur, Illinois

Hello Everyone,

The Midwest Federation's 76th Annual Meeting will be held in conjunction with the Annual Show of the Michiana Gem and Mineral Society, Aug. 19-21 in South Bend, IN.

The Council of Delegates Meeting will be held Aug. 20 at 1 p.m. in the Esther Singer Building of the St. Joseph County Fairgrounds, 5117 Ironwood Road, South Bend, IN 46614.

Each member club/ society is entitled to one delegate and one alternate to represent them, although each club is only entitled to one vote.

There is a Delegate Registration form on page 12 of the MFW newsletter that must be filled out and signed by the president of your club. This form will also be available on the MWF website. The form on the website can be typed out on your computer, printed, signed by the president of your club and mailed to me, Tony Kapta, 1483 E. Wood St., Decatur, IL 62521 or scanned and e- mailed to me at cigmc@comcast.net.

This is your club's chance to send a representative to the annual meeting and vote on the business which will be before the members of the MWF. This also allows your delegate to report back to the club on what business was discussed during the meeting.

Lastly, it allows your club to be represented at an MWF function and gives your delegate an opportunity to meet the representatives of other clubs and the Officers, State Directors, and Committee Chairs of the MWF. There is also the added benefit of being able to attend a great gem, mineral and fossil Show.

These are important points to consider for all MWF clubs and I urge you to carefully consider sending a representative from your club to the MWF Council of Delegates Meeting. I realize the trip is a financial burden, as it is to me and all of the people who have been gracious enough to donate their time and money to take care of the business of making the MWF work for you, the clubs. Helping other clubs is as important a part of having a club as any of the other things that we do.

I hope to see you at the MWF Convention.

JEWELER'S BENCH: BARBARA KUHLMAN



When I was a little kid, about 13, my mother sent me to the Cranston School of Art. She was always buying me painting supplies. I don't know if I was interested in art, but my mom thought I was, and the art teacher was trying to drum up business for her little art school. I had one of my pictures printed in the *Providence Sunday Journal* one time.

There we painted. We sat on the lawns and painted the elm trees. No one now knows what an elm tree looks like... It's sad.

Painting isn't always fun, but it is something I do well. It is something I have gotten positive feedback for.

Later I pursued other artistic endeavors; the birds came later.

I colored photographs for Ray Hershberg here in Richmond. He was a world-class photographer who won a lot of awards. While I was good at coloring the photos, I didn't really enjoy it. It isn't very creative work to do. Then I got married and we moved to Indianapolis and I quit.

Later I went with a friend and painted greenware (pottery) for a while. I began doing a lot of under-glazing for people (painting scenes on other people's plates for them). I also got to do some of my own work. It was then that I used a bird mold and then began making nests and eggs. You then

graduate from sparrows to robins to woodpeckers to eagles, owls, all birds of prey. I never had a problem selling anything – the birds always sold.

I started selling the birds downtown at Reeg's Quaint Shop, a little gift shop at about 7th and Main. I sold them at first for \$5 apiece. I carried the birds down to the shop every Monday, and they sold out that morning. The ladies would be lined up for them. I was really lucky. I started on the birds in the 1970s; it was an easy sell because at the time people were really into feeding the birds and watching birds.

Once the owner passed away, I sold through Stevens' Gift Gallery for a while. Then we sold at Hayes Arboretum. I would also sell through retail shops. We also opened a little retail shop for a while in the Old Richmond Court in the late 1980s. Over the years we raised the prices.

I put Susan through Indiana University on bird money.

In my life I think I have done over 10,000 birds. We didn't keep very accurate records. Over the years cardinals, robins, hummingbirds, and goldfinch have been very popular. Right now chickens are really popular.

When the kids were little I did a lot of watercolor paintings, but I never showed much. It takes a lot of effort to frame them, etc. to get them ready to show.

I still paint watercolors, but I have more a passion for the birds and clay. Either way, they are a just a product. We never said it was "fine art." I'm not a good "clay technician," in terms of temperature, etc., but I am a good underglazer; I can underglaze anything!

When I was first married my mother and sister-in-law would go out west and bring home rocks. They were lovely!

■ *continued on page 13*

Name: Barbara Kuhlman
Occupation: artist; award-winning watercolorist
City, State: Richmond, IN
Club member since: 2009
Education: degree in fine arts from Principia College in Illinois in watercolor; attended Massachusetts School of Art & learned to do etchings
Artistic media: Watercolor, oil painting, ceramics, block printing, coloring photos, etchings, quilt-making



Agate kettle



Cosmic jasper



Montana agate



Petoskey stone



Pudding stone



Rainforest jasper

JEWELER'S BENCH: BARBARA KUHLMAN

■ continued from page 12

I bought a little grinder and I would sit in the basement and grind by the hour! Then I started setting the cabochons that I made.

Then when the kids came a long and we moved, I stopped doing that. We did make trips to the national parks and picked up some rocks on our travels. I picked the lapidary work back up when I joined the rock club.

Have you always liked rocks and gems?

I took geology in school and loved it. I was good at it. However, I was told early on that there were no jobs for women in geology at that time. Our school took us on some wonderful field trips. We went to a coal mine and you could lift up the coal and see the fossilized leaves below. We went to a quarry to collect trilobites. I still love to study volcanos and changes in the earth. I think geology is fascinating. You look at some of these stones and you think about how long they have been in the ground.

What spurred your interest?

I never met a stone I didn't like. I started out cabbing and polishing stones. And then you have to do something with them, so I began the jewelry work. People have always been looking for gold and silver. Joe got me interested in silver and in making things. It is much more difficult than ceramics. It takes a lot of strength. Because of that, I just can't do it much any more with my hands.

What types of jewelry do you make?

Kind of off-the-wall, free-form, weird stuff. I can't do the really beautiful work, but I can make it interesting. I am more of a designer at this point since I don't have the strength in my hands to do it. Now I tend to work on more component pieces for Susan. I like to combine the stones and metal together to see how to combine things. I have so many ideas I just can't get them all done.

What is the most rewarding thing about making jewelry?

Seeing it be finished and having it look better than ever hoped for. There is a satisfaction to finishing something. For example, when you open the kiln and you see all the birds and see a week of your work. When you have polished your stone and set it and then someone loves it, there is a lot of satisfaction in that.



■ Working on a silver pendant using fossil coral, Barbara Kuhlman takes time out for a selfie with Jan Roestamadji.

■ Working at the registration table at the rock show, Susan Kuhlman sells tickets while Barbara encourages scholarship donations.

What are your favorite artistic materials to work with? Why?

I like clay. It is soft and easy on my hands. I like silver, but it is hard to work with. I like copper, too, and gold, but I will stick with silver. It is sort of like framing; you use the silver to frame the stone and draw attention to it.

What are your favorite stones with and why?

I don't really have one, but I really love a pretty turquoise... and rhodochrosite... and labradorite... Every stone I work with becomes my favorite.

■ continued on page 14



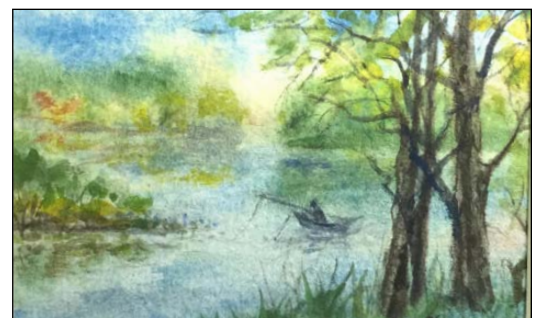
Red coral & blue topaz



Red jasper & boulder opal



Snowflake obsidian



Watercolor

JEWELER'S BENCH: BARBARA KUHLMAN

■ continued from page 13

In addition to the stones you have for jewelry making, do you collect other stones?

I don't collect any more but I have collected. I have a meteorite and fossils. I think that if I had the money I would collect opals.

What is the most challenging part of making your pieces?

The most challenging part on the birds is putting it in the kiln after working for a week. You always hope not to drop a week's work. You then have to wait 24 hours to see whether it will be "Christmas or Halloween," whether things turn out or not. I have been lucky and have had very few kiln failures. It is satisfying when something comes out of the kiln and it is more successful than you think it would be.

From where do you draw your inspiration?

I look out the window a lot. For jewelry, I let the stone inspire me. If it looks like an eye, I make an eye. If it looks like a kettle, it becomes a kettle. There is a pair of "eyeglasses" I want to do and a dragon piece I am working on.

Do you have a personal favorite piece of jewelry?

I really like the kettle piece that I made and the turtle. I also have a rhodochrosite piece that I made that I wear a lot.

How many hours a week do you work on art?

I work on jewelry on Monday mornings. When I have projects, I put in several hours a day. I used to work full time on it all.

What advice would you give aspiring artists?

You have to have a sense of humor because you will make some big "boo boos," and you can't let it discourage you.

Where do you sell your pieces?

I sell at the Holiday Art Mart in December and occasional private sales. I will probably sell at PotteryPalooza in September on the lawn at the Richmond Art Museum.



■ Owl with a nest. Photo courtesy of Susan Kuhlman
■ A watercolor painting from the 2015 Holiday Art Mart.



What awards and honors have you won for your pieces?

I won at the McGuire Show for professional artists several times. You weren't allowed to win first place for consecutive years, so on the "off years," I would earn second or third.

I showed at the Hoosier Salon and at the National Art Gallery in Washington.

■ continued on page 15



Nest



Goldfinch



Cardinal



Nest

JEWELER'S BENCH: BARBARA KUHLMAN

■ continued from page 14

I have pieces in the Richmond Art Museum, at Principia College, and in the Richmond school system, but I'm not sure which schools. I have sold pieces all over the country and even all over the world. I also contribute pieces to be auctioned for charity for Art to Heart for Reid and RAM, for the Women's Fund and for EIGGS.

Why would you encourage people to get involved at the rock club?

I think the members of the club do some beautiful work. They turn out such nice pieces. I think a lot of people would enjoy it and they have a diverse membership, which is very interesting.

Besides making jewelry, what are your other hobbies and interests?

Cooking, gardening. We had a huge garden when I was young. I used to raise wonderful lima beans. I used to pull weeds and the kids would sit on the front porch selling vegetables. I like to knit, sew and crochet, also.

What else about you would you like to share about yourself?

I like cats because they are soft and fuzzy. If you have a cold they will sit on your chest and that heat will cure you overnight. I like dogs and groundhogs. I am a "tree-hugger." Anyone who defaces nature is my enemy.

Miscellaneous memories...

The Dickinson log cabin at the Wayne County Historical Museum is the cabin that my father was born in. There was a migration of Quakers from Philadelphia to Richmond in the 1820s. They came in a Conestoga wagon. They spent the winter in that wagon with 10 or 12 kids before they arrived and bought the cabin.

Whenever the Hindenburg came over from Germany it always passed over our school in Cranston, Rhode Island. You could see the people wave and we would hang out the school window and wave back. One day it was very low and the weather was bad. We waved at them as they went by. Later it was struck by lightning and the hydrogen ignited and it exploded. That was its last flight.

[American baritone singer, trumpeter, big band leader and actor] Vaughn Monroe played with a musician friend of the family. They were in Boston playing in a band, so he came down to our Sunday chicken dinner. He sat at our baby grand piano and sang. My older sisters were "gaga" for him. I was a little young, so I wasn't as taken with him.

My roommate married Alan Shepherd, so I met an astronaut. I was always upset when they said that the moon landing was a hoax because his wife wouldn't have lied about that.

The artist Robert Indiana's mother couldn't keep him during the Great Depression. As a baby he wound up with my mother-in-law, who was a "do-gooder." My sister-in-law wanted to keep him, but my mother-in-law found a home for him. The family was close to him for a while, but we have lost touch.



■ The Richmond Art Museum has several of Barbara Kuhlman's bird pieces on display, including this one with two hummingbirds.
■ A watercolor painting from the 2015 Holiday Art Mart.



■ Several nests, including this one, were available for purchase at the 2015 Holiday Art Mart.

My sister married a Levinson, and his uncle was Norman Norell, who was a prominent dress designer in the 1930s and 40. He was the "dean of American dress design," and designed for Lauren Bacall and Gloria Swanson, among others.

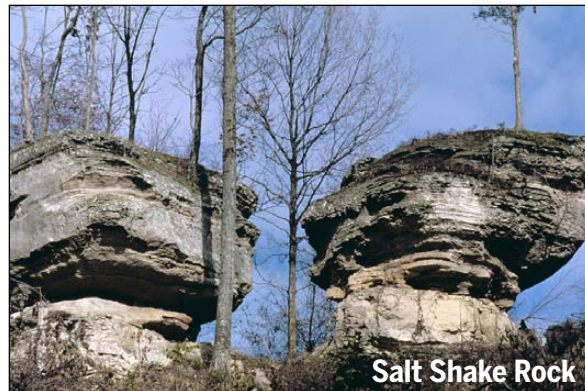
I've been very fortunate in my life. I have been very lucky and have gotten to do so many things.

In this feature, we hope to showcase the talents of one member each month. If you would like to suggest a member, please e-mail EIGGSnews@gmail.com

Standing Rocks: Ancient Remnants of Erosion

Standing rocks are pillarlike masses of rock that stand alone, detached from the main body of bedrock in an adjacent cliff or hillside. There are several standing rocks in Indiana: Jug Rock, near the town of Shoals in Martin County; Salt Shake Rock, near Sulfur in Crawford County; and Pompey's Pillar, near Napoleon in Ripley County. The Seven Pillars of the Mississinewa, near Peru in Miami County, are similar in structure but are still attached to the parent rock and, therefore, are almost, but not quite, standing rocks.

Because standing rocks are erosional remnants shaped by frost, plant roots, and running water acting on joints in the rock, continued weathering and erosion will ultimately destroy them. Pedestal Rock in Shades State Park (located in Montgomery, Parke, and Fountain Counties) collapsed after a severe storm. Only a pile of shattered sandstone slabs is left.



UPCOMING SHOWS

June 24-26—BEDFORD, IN: Annual show; Lawrence County Rock Club, Lawrence County Fairground; US Highway 50; Fri. 10 a.m.-6:30 p.m., Sat. 9 a.m.-6:30 p.m., Sun. 10 a.m.-4 p.m.; Free Admission; 51st Annual Gem, Mineral and Fossil Show sponsored by the Lawrence County Rock Club, Inc. There will be wide variety of gems, jewelry, minerals, fossils, rocks, lapidary equipment & supplies, rockhound & prospecting supplies, 4-H project material, science project material. Contact Dave Treffinger, 13101 E 250 N, Loogootee, IN 47553, (812)-295-3463; e-mail: djt5766jkt@msn.com; Web site: www.lawrencecountyrocksclub.org

July 8-10—CEDARBURG, WI:

2016 Agate Expo. Cedarburg High School, W68N611 Evergreen Blvd., Cedarburg, WI 53012 Open: Thursday, July 7: 6:30– 9 p.m. (Symposium Ticket Holders Only) Friday, July 8 & Saturday, July 9: 9:30 a.m. – 6 p.m. Sunday, July 10: 10 a.m. – 4 p.m. The show floor will consist of approximately 45 vendors, from across the globe, showcasing their products for collectors and rock enthusiasts. We are inviting vendors who sell everything from top specimens to small tumbled stone; as long as Agates are predominantly presented. The Show Floor and Exhibits will be open to the public on Friday, Saturday and Sunday. During these show times, we will also have two concession areas open; as well as a children's area with fun activities for all ages. We hope you join us for this exciting event!

August 19-21—SOUTH BEND, IN: MWF Convention & Show

Show and sale; Michiana Gem & Mineral Society, St. Joseph County 4-H Fairgrounds, Ester Singer Building; 5117 South Ironwood Rd.; Fri. 12-7 p.m., Sat. 10 a.m.-6 p.m., Sun. 10 a.m.-5 p.m.; Admission \$3, Children 6-12 \$1; Michiana Gem & Mineral Society 53rd Annual Jewelry, Gem & Mineral Show and Sale and 76th Midwest Federation of Mineralogical & Geological Societies Convention. Attractions include gem, fossil, mineral and jewelry dealers, lapidary arts demonstrations, exhibits, Kid's Korner, and silent auction. Contact John Davis, (574)-232-8823; e-mail: sumu95@hotmail.com; Web site: www.michianagms.org

Sept. 9-11—GREENFIELD, IN: Annual show; 500 Earth Sciences Club, Hancock County 4-H Fairgrounds; 620 N. Apple Street; Fri. 10 a.m.-7 p.m., Sat. 10 a.m.-7 p.m., Sun. 10 a.m.-4 p.m.; Free Admission; Dealers and swappers in fossils, minerals, gems and jewelry and lapidary equipment plus silent auctions, door prizes and much more. Kids activities, demonstrations, educational displays and programs for all. Contact Cheryl Hamilton, 3507 Luewan Dr., Indianapolis, IN 46235, (317)-897-3369; e-mail: clhamilton1951@gmail.com

Sept. 30-Oct. 2—INDIANAPOLIS, IN: Annual show; Treasures Of The Earth Gem & Jewelry Shows, Indiana State Fairgrounds - Ag/Horticulture Bldg; 1202 East 38th Street; Fri. 10 a.m.-6 p.m., Sat. 10 a.m.-6 p.m., Sun. 11 a.m.-5 p.m.; Adults \$5 (Good all 3 days), Children under age 16 free when accompanied by an adult. Jewelry makers, goldsmiths and silversmiths from all over the U.S. who can reconstruct, repair, design or make original jewelry from customer-selected gems, stones, opals and crystals. Wire wrap, wire sculpture,



stone beads, pearls, stone setting, amber, opal, mineral and fossil dealers. Hourly door prizes including a Ring with a precious stone that will be given as a Grand Prize. Note the Fairgrounds charges \$5 per day for parking. Contact Van Wimmer, Sr. - Show Director, 5273 Bradshaw Road, Salem, VA 24153, (540) 384-6047; e-mail: van@toteshows.com; Web site: www.toteshows.com

Oct. 14-16—FORT WAYNE, IN: Annual show; Three Rivers Gem and Mineral Society, Allen County Fairgrounds; 2726 Carroll Rd.; Fri. 10 a.m.-6 p.m., Sat. 10 a.m.-6 p.m., Sun. 11 a.m.-5 p.m.; Adults \$5, Seniors \$3, Students \$1, Children free. Gem, fossil, mineral and jewelry dealers, lapidary arts demonstrations. Viking knit classes, geode cracker, gem sluice, kids games, door prizes, silent auction, fluorescent room and more. Contact Russell Greim, (260) 403-0450; e-mail: 3riversshow@gmail.com; Web site: bit.do/3rivers-show



MATCH GAME

Feeling creative? If you are a builder or enjoy simple electrical projects, please talk to Patrick Pierce about creating a rock matching game for the kids' area of next year's show. In this game a child touches one electrode (stereo patch cord?) to a metal disk beside the name of the stone and also touches the disk next to the corresponding stone. If the match is correct, a bulb lights up to let them know they were right.

MWF CONVENTION IN SOUTH BEND, INDIANA!!

Michiana Gem & Mineral Society's Annual Jewelry, Gem & Mineral Show and Sale

53rd Annual Show and the 76th Midwest Federation of
Mineralogical & Geological Societies Convention

August 19, 20, & 21, 2016

Friday Noon to 7 pm * Saturday 10 to 6 pm * Sunday 10 to 5 pm
Show Theme: "Midwest Minerals"



St Joseph County 4-H Fairgrounds
Esther Singer Building
5117 South Ironwood Road
(Ironwood and Jackson Road)
South Bend, Indiana 46614

Admission:
Adults: \$3.00
Kids 6-12: \$1.00
Under 6: FREE
Parking: FREE

Two Host Hotels!

Super 8 (Wyndham Hotel)
4124 Ameritech Dr.
South Bend, IN
1-574-243-0200
\$48 - \$90 plus tax - depending on room type
Located off U.S. 20 Bypass & I-80/I-90 Toll
Road exit 72.
Free continental breakfast, wifi, indoor pool,
guest laundry, & elevator.

Candlewood Suites (IHG--Holiday Inn)
3916 Lincoln Way West
South Bend, IN
1-574-968-1072
\$110 plus tax
Located east of U.S. 20 Bypass near South
Bend Airport.
Free laundry, wifi, fitness center & 24 hr.
convenience store.

By John Davis, MGMS Show Chairman

The Michiana Gem & Mineral Society in South Bend, Indiana, is holding its 53rd annual Gem and Mineral Show this year in conjunction with the 76th MWF Convention. We would like to invite everyone to join us for a fabulous weekend.

This year our show will have two guest speakers. The first will be Mark Tarner, who is a club member, amateur paleontologist, and local businessman. He will give a talk on the process of digging and recovering his Duckbill Hadrosaur. The second speaker, Mr. Rick Strapple of "The Rare Earth Company," will talk about Midwest minerals.

We will have some fantastic dinosaur displays from Mark Tarner and our other paleontologist, Don Szczodrowski. Many other displays of self-collected and handcrafted arts and crafts from our local members will be enjoyed by all who view them.

But above all else, the highlight of our show is our silent auction tables. We have, at any given time, nearly one hundred items being auctioned. We have these auctions every half hour, through the entire weekend. Auction items run from old magazines to gems and minerals. Even our vendors seem to find something to bid on.

And don't forget, Sunday will be the MWF Silent Auction. If you can't find something on Saturday, see what items will be available on Sunday, from all over the Federation! It will be a rockin' good time!

CONVENTION & SHOW SCHEDULE

St. Joseph County 4-H Fairgrounds
Esther Singer Bldg.
5117 S. Ironwood Rd. (Corner of Ironwood & Jackson)
South Bend, Indiana
(All events will be held in the Esther Singer Building)

FRIDAY: August 19th

12:00 p.m. - Show opens
7:00 p.m. - Show closes

SATURDAY: August 20th

7:30 a.m. - Light breakfast (Esther Singer Kitchen)
8:00 a.m. - State Directors meeting
9:00 a.m. - Executive Meeting
10:00 a.m. - Show opens
11:00 a.m. - PROGRAM: *Finding a Dinosaur*, by Mark
Tarner of the South Bend Chocolate
Company
12:00 p.m. - Lunch (Esther Singer Kitchen)
12:00-1:00 p.m. - Delegate registration
1:00 p.m. - Council of delegates meeting
2:30 p.m. - PROGRAM: *Mineralogy*, Mr. Rick
Strapple from the Rare Earth Company
6:00 p.m. - Show closes
7:00 p.m. - Awards Banquet

SUNDAY: August 21st

10:00 a.m. - Show opens
12:00 p.m. - Light lunch (Esther Singer kitchen)
5:00 p.m. - Show closes